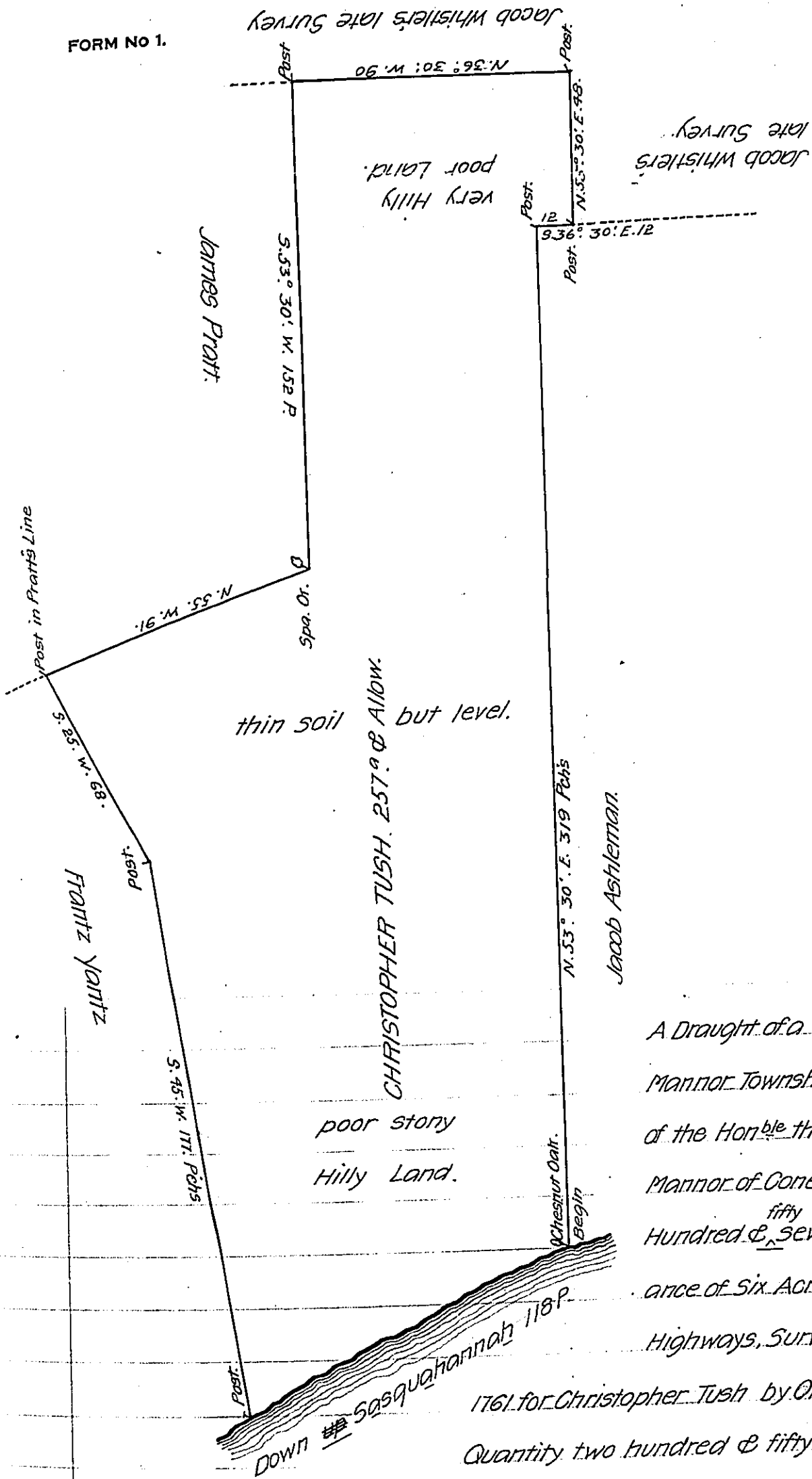


FORM NO 1.



A Draught of a Tract of Land Situate in
 Mannor Township Lancaster County (Part
 of the Hon^{ble} the Proprietaries their
 Mannor of Conestogo) containing two
 Hundred & ^{fifty} seven Acres and the Allow-
 ance of Six Acres P. Cent. for Roads &
 Highways, Survey'd the 14th day of March
 1761. for Christopher Tush by Order of the Agents.
 Quantity two hundred & fifty Seven Acres. P.
 Geo. Stevenson. —

IN TESTIMONY that the above is a copy of the original remaining on file in
 the Department of Internal Affairs of Pennsylvania, made
 conformably to an Act of Assembly approved the 16th day of
 February, 1833, I have hereunto set my Hand and caused
 the Seal of said Department to be affixed at Harrisburg,
 this first day of August 1907.

Henry Houck
 Secretary of Internal Affairs.